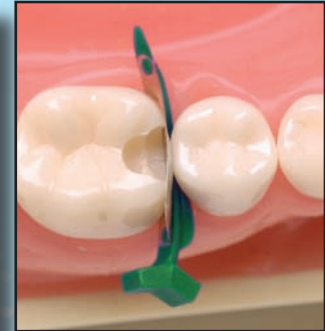


## A tissue-friendly way to Class II restorations

Placing a matrix band to attain a good contact point and avoiding interproximal overhang after preparation for Class II fillings can be a time-consuming and laborious procedure. Directa's new FenderMate® offers a unique, fast and easy solution by combining a separating plastic wedge and stainless steel matrix in its innovative design.

With Directa's FenderMate®, the combined matrix and wedge are inserted as one piece, as easily as a wedge; and uses a special new technology in its curved design that contours and compliments the curvature of the patients tooth. After FenderMate® is inserted, it adapts around the tooth and holds its shape without the use of a retentive ring. The flexible wing of the FenderMate® separates the teeth and firmly seals the cervical margin. A good contact point is created by the unique pre-shaped indentation in the matrix. No burnishing whatsoever is necessary.

FenderMate® is available in two wedge widths - Regular and Narrow - and for Left or Right application.



Directa's FenderMate® and FenderWedge®

They are colour-coded for ease of identification. The new and innovative design accommodates most approximal spaces. The combined use of Directa's new FenderMate® and FenderWedge® sets a new standard with a tissue-friendly approach for the preparation and filling of Class II restorations.

www.idem-singapore.com

REGISTER ONLINE NOW!



INTERNATIONAL DENTAL EXHIBITION AND MEETING  
Scientific Conference: 15-18 April, 2010  
Trade Exhibition: 16-18 April, 2010

Endorsed By:



Supported By:



Held In:

UNIQUELY Singapore

www.visitsingapore.com

## The Pivotal Dental Event in Asia Pacific Welcomes You

### SCIENTIFIC CONFERENCE

#### Encountering the Cutting Edge of Implantology and Aesthetic Dentistry

IDEM Singapore 2010 Scientific Conference provides the expertise and insight you need to expand your skill set, optimize patient care, and enhance practice revenue. Earn over 30 academic accreditation points for your accrual in your country's continual education programme. A pre-congress day opening in advance will focus on Soft and Hard Tissue Management in Advanced Implantology.

Make IDEM Singapore Your Choice for Continual Education.

### SPEAKER HIGHLIGHTS



**Dr. Ricardo Mitriani** -  
Dentogingival Aesthetics – An Interdisciplinary Approach to Treatment Planning



**Dr. Keith Phillips** -  
Aesthetics and Functional Concerns for Fixed Implant Prosthodontics



**Dr. Roland Glauser** -  
Shortened Clinical Protocols – Choosing the Optimal Treatment Strategy

For a full list of speakers and abstracts, please visit our website.

### TRADE EXHIBITION

IDEM Singapore invites you on a journey of discovery of new products and technology for your business growth.

Meet more than 350 international exhibitors from over 30 countries and interact with the top names of the dental industry.

Source with ease with our comprehensive product groups. Pre-arrange your business meetings with our new online business matching service available to pre-registered visitors.

Expand your networks and knowledge sharing opportunities with other professionals and opinion leaders at our various networking events.

**Register online today for your free exhibition admission and access to business privileges!**

Limited Choice Booths Available

In Cooperation With:



Organizers:



Singapore Dental Association



Sharon Ng  
Koelnmesse Pte Ltd  
Tel: +65 6500 6722  
Fax: +65 6296 2771  
s.ng@koelnmesse.com.sg